

# Epiphany® Case of the Month

## Epiphany case description and radiographs courtesy of

Anna Kirakozova, DDS<sup>†</sup>

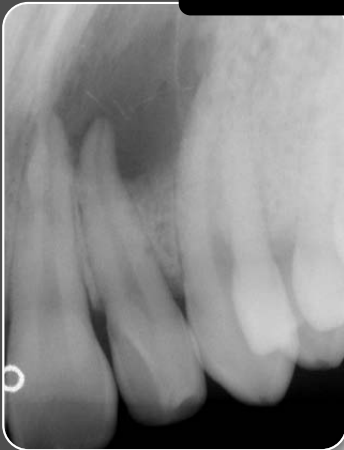
Graduate Endodontics

University of North Carolina at Chapel Hill



<sup>†</sup> Case completed when Dr. Kirakozova was an undergraduate student at UNC.

Pre-Op



A 22 year-old male presented with a history of pain and swelling related to the upper left lateral incisor. The radiograph revealed a large periapical radiolucency. Clinical testing led to a diagnosis of necrotic pulp and acute exacerbation of chronic apical periodontitis with abscess.

Post-Op



Emergency treatment was performed. The patient returned for the next appointment 10 days later and was asymptomatic with slight swelling apical to the tooth. The coronal two-thirds of the canal were instrumented with Profile<sup>®1</sup> NiTi rotary files and the apical third was prepared with hand .04 taper NiTi files to apical size 60. Copious irrigation with 1% sodium hypochlorite was used throughout the procedure. A slurry of calcium hydroxide mixed with 0.12% CHX was placed into the canal using a lentulo spiral. The access cavity was sealed with a cotton pellet and IRM<sup>®1</sup> material.

At the next visit, 10 days later, the calcium hydroxide was removed and the canal was irrigated with 1% sodium hypochlorite and 17% EDTA. The root canal was dried with sterile paper points. Epiphany<sup>®</sup> Primer was applied for 30 seconds with a paper point and then the excess was removed with dry paper points. Epiphany<sup>®</sup> Sealer was then placed into the canal using the Resilon<sup>™</sup> master cone. Medium-fine Resilon<sup>™</sup> accessory points were used to complete the obturation of the canal using a cold lateral condensation technique. GC Fuji IX GP<sup>™2</sup> glass ionomer cement was placed over the canal orifice and the access cavity was sealed with a light-cured composite restoration.

One year



At the 1 year follow-up appointment, the patient reported no symptoms. Radiographic examination of tooth #10 revealed favorable healing of the periapical tissues with bony regeneration and a normal appearance of the PDL space and lamina dura.

For available research and more case radiographs using the Epiphany<sup>®</sup> System and Resilon<sup>™\*</sup> obturation material, please visit [www.resilonresearch.com](http://www.resilonresearch.com).

For information on the Epiphany<sup>®</sup> Soft-Resin Endodontic Obturation System call Pentron Clinical Technologies at 1-800-551-0283 or visit [www.pentron.com](http://www.pentron.com).



Pentron Clinical Technologies, LLC  
800.551.0283 | [www.pentron.com](http://www.pentron.com)  
in Canada call SYNCA at 800.667.9622

Advancing dentistry one innovation at a time.<sup>™</sup>

<sup>1</sup> Profile and IRM are registered trademarks of Dentsply International, Inc.

<sup>2</sup> GC Fuji IX GP is a trademark of GC America, Inc.

\*Resilon is a trademark of Resilon Research, LLC.

Copyright © Pentron Clinical Technologies, LLC. 2006. All rights reserved.