

July 2006

Epiphany® Case of the Month

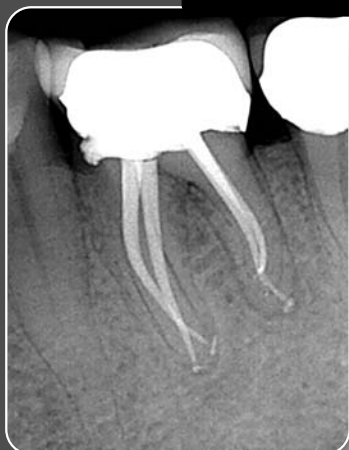
Pre-Op



Post-Op



7 months



Epiphany case description and radiographs courtesy of Richard Rubinstein, DDS, MS, FACD Practice Limited to Endodontics Farmington Hills, Michigan



A 66 year old female patient presented with a history of pain upon chewing on tooth #19. Clinical testing revealed tenderness to percussion. A diagnosis of periradicular periodontitis was established. The root canal therapy was completed in one visit. After root length determination, a glide path was established using Maillefer®¹ .02 stainless steel hand files. Four canals with separate apical termini were located. There were two separate distal roots, one canal in each root. ProTaper®² nickel titanium rotary files were then used to prepare all four canals. Copious amounts of 6.00% sodium hypochlorite were used during and after each file capitulation. The final file used was an F2, which has a 0.25mm tip size and a taper of .08mm/mm from Do to D3. After the apex was gauged to a size 25 .02 K-File, the canals were rinsed again with 6.00% sodium hypochlorite. Four Fine-Medium Epiphany® points were then custom cut so that appropriate tug back was demonstrated. Confirmation of cone fit to the radiographic terminus was verified radiographically. The Epiphany® points were then removed and the canals were rinsed with BioPure®² MTAD®² cleanser which was followed by a five minute soak. After the canals were dried with paper points, Epiphany® Primer was placed in the canals and the excess removed with paper points. The canals were coated with Epiphany® Sealer using the master cones. Vertical compaction was accomplished with the System B™³ and fine tip for the downpack and Obtura® II™⁴ with Epiphany® pellets and Schilder pluggers (Maillefer) for the backpack.

At the 7-month check up, the patient presented with no symptoms and the comparative digital images displayed evidence of complete bone regeneration.

For available research and more case radiographs using the Epiphany® System and Resilon™* obturation material, please visit www.resilonresearch.com.

For information on the Epiphany® Soft-Resin Endodontic Obturation System call Pentron Clinical Technologies at 1-800-551-0283 or visit www.pentron.com.



Pentron Clinical Technologies, LLC
800.551.0283 | www.pentron.com
in Canada call SYNCA at 800.667.9622

Advancing dentistry one innovation at a time!™

¹ Maillefer is a registered trademark of Dentsply/Maillefer.
² ProTaper, BioPure and MTAD are registered trademarks of Tulsa Dental products, Inc.
³ System B is a trademark of Sybron Dental Specialties, Inc.
⁴ Obtura II is a trademark of Obtura Corporation.
*Resilon is a Trademark of Resilon Research, LLC.
Copyright © Pentron Clinical Technologies, LLC. 2006. All rights reserved.