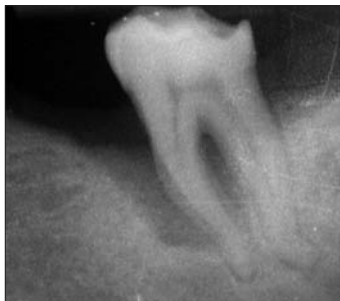


Epiphany® Case of the Month



Pre-op



Post-op



Sixteen months

Epiphany case
and radiographs
courtesy of
Dr. Liviu Steier,
Mayen - Germany



A 47 year old male patient presented with acute pain in tooth #18 (ISO #37). The clinical examination revealed swelling, a positive percussion test, and pain upon palpitation. A fistula was registered and radiographically traced. The patient could not report any specific details. The tooth was conventionally accessed, and the canals were mechanically shaped. Using hand and NiTi rotary files, patency was achieved on all canals. The chemical preparation was performed using copious amounts of heated 5.5% NaOCl and 17% EDTA. After final irrigation with 10% Natriumascorbat followed by distilled water, the canals were obturated with the *Epiphany* Soft Resin Obturation System using System B and Obtura®¹. The coronal access was sealed with the Bond-It® Adhesive System and closed using Build-It® FR™ Core Build-up Material. The patient presented 16 months later and reported that he was symptom free. The follow up radiograph shows the partial resorption of the surrounding bone lesion.

For information on the *Epiphany* Soft-Resin Endodontic Obturation System call Pentron Clinical Technologies at 1-800-551-0283 or visit www.pentron.com.

For available research and more case radiographs using the *Epiphany* System and Resilon™* obturation material, please visit www.resilonresearch.com.



¹ *Obtura* is a Registered Trademark of Obtura Spartan.

**Resilon* is a Trademark of Resilon Research, LLC.

Copyright © Pentron Clinical Technologies, LLC. 2005. All rights reserved.