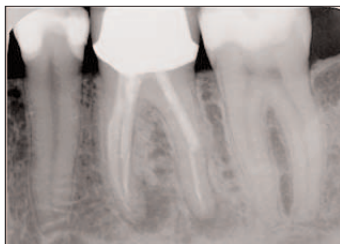


Epiphany® Case of the Month



Pre-op



Post-op



Twelve months

Epiphany case and radiographs courtesy of Dr. Marga Ree, DDS, MSc., Purmerend, Netherlands.



A 39 year old, female patient presented complaining of pain in tooth #36. Upon examination, swelling was found and percussion testing and palpitation produced a positive response. The patient indicated that this tooth had received RCT 8 years previously; see the pre-op radiograph. The tooth was accessed through a PFM crown and a titanium post was removed from the distal canal. During retreatment, a missed distal canal was uncovered. Using rotary and hand files with copious irrigation of alternating 5% NaOCl and EDTA, patency on the distal and mesio-buccal canals was achieved, but not on the mesio-lingual canal. After final irrigation with 2% chlorhexidine, the canals were dressed with calcium hydroxide. One month later, the calcium hydroxide was removed and the canals were obturated with the *Epiphany* Soft Resin Obturation System using System B and Obtura. A composite core build-up was fabricated and the access opening sealed with a bonded composite; see the post-op radiograph. One year later the patient reports that she is symptom free and the tooth is functioning well. The follow-up radiograph shows that the radiolucency has resolved and that though the *Epiphany* cone in the distal root was long, it did not prevent healing; see the 1 year follow-up radiograph.

For information on the *Epiphany* Soft-Resin Endodontic Obturation System call Pentron Clinical Technologies at 1-800-551-0283 or visit www.pentron.com.



For available research and more case radiographs using the *Epiphany* System and Resilon™* obturation material, please visit www.resilonresearch.com.

*Resilon is a Trademark of Resilon Research, LLC.
Copyright © Pentron Clinical Technologies, LLC. 2005. All rights reserved.